



Winter Operations Update

Winter 2022-2033





THE FOLLOWING ARE THE PRIORITIES FOR SNOW REMOVAL:

#1 MAIN STREET AND THE CENTRAL CORE AREA:

MAXIMUM SERVICE IS PROVIDED ON MAIN STREET TO MOVE THE MAJORITY OF THE TOWN'S TRAFFIC. SNOW IS FIRST REMOVED FROM THE SIDEWALKS TO THE PARKING AREAS, AND THEN PLOWED TO THE CENTERLINE OF MAIN STREET. THE SNOW PILE IS THEN BLOWN INTO TRUCKS UTILIZING A LOADER MOUNTED SNOW BLOWER AND HAULED TO DESIGNATED SNOW STORAGE AREAS.

#2 RESIDENTIAL STREETS:

THESE STREETS ARE PLOWED IMMEDIATELY AFTER MAIN STREET WITH EMPHASIS ON SCHOOLS, FIRE STATION, BUS ROUTES, STOP SIGNS, HILLS, CURVES, AND INTERSECTIONS. SNOW IS PLOWED ONTO THE STREET OF RIGHT OF WAYS WHEN ACCUMULATIONS REACH TWO INCHES OR MORE. THIS TYPICALLY REQUIRES TWO PASSES BY THE PLOW TRUCK TO GET THE JOB COMPLETED.

#3 ALLEYS:

THE COMMERCIAL DISTRICT OF TOWN IS NORMALLY PLOWED FIRST, FOLLOWED BY THE RESIDENTIAL AREA. THIS INCLUDES THROUGH ALLEYS ONLY.

#4 DEAD-END AND/OR UNIMPROVED ALLEYS:

THESE ALLEYS WILL GET PLOWED AS SOON AS POSSIBLE, WHICH COULD COME LATER THAN SURROUNDING AREAS DEPENDING ON THE SIZE OF THE STORM EVENT. (PLEASE SEE NEXT SHEET)

NOTE:

SUMMIT BOULEVARD IS MAINTAINED BY THE COLORADO DEPARTMENT OF TRANSPORTATION (CDOT). ALL OTHER ROADS NOT NOTED ARE MAINTAINED BY SUMMIT COUNTY ROAD AND BRIDGE OR PRIVATE CONTRACTORS.

Legend

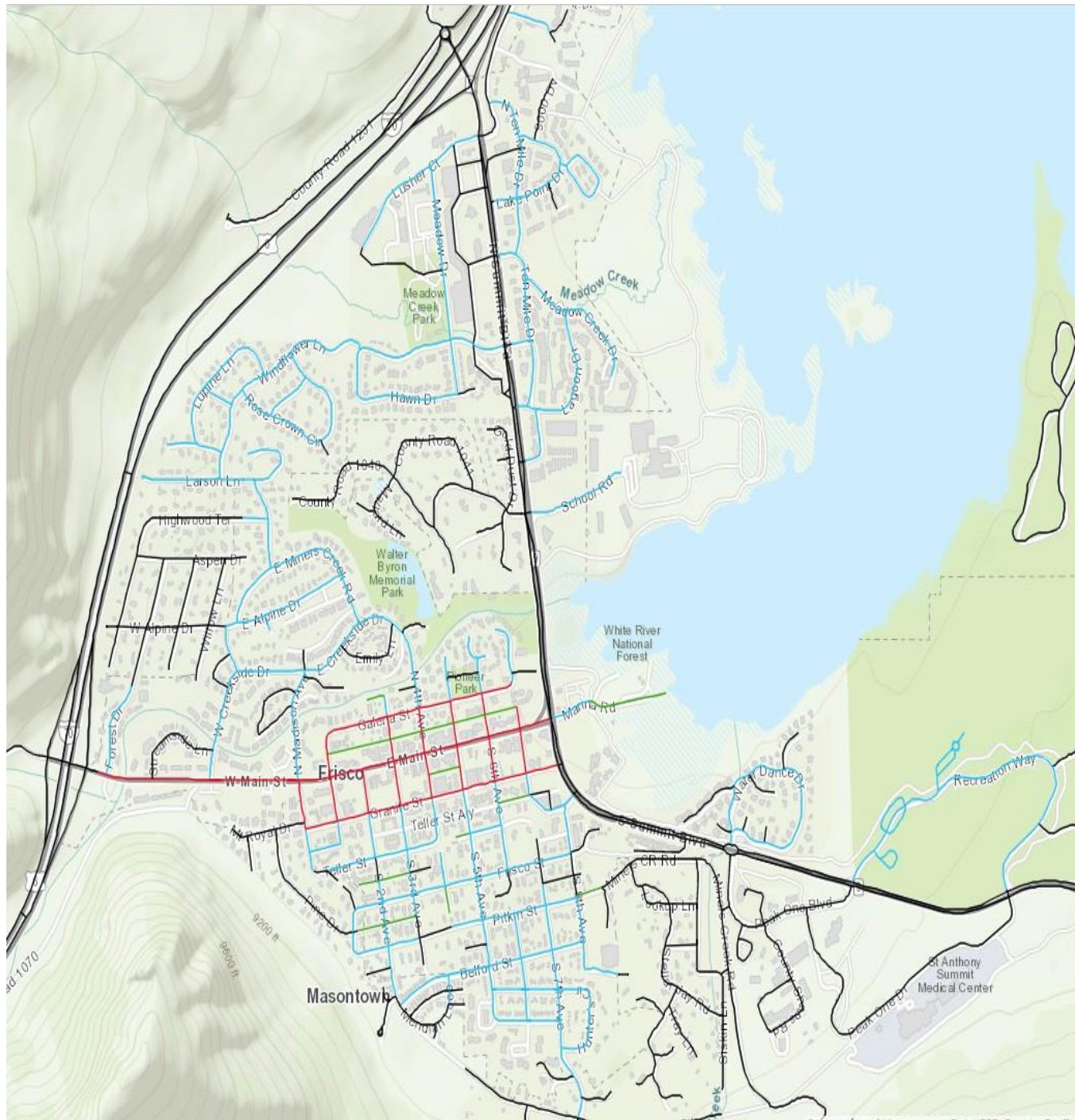
Plow_Routes

Blue - Second Plowing Priority

Green - Third Plowing Priority

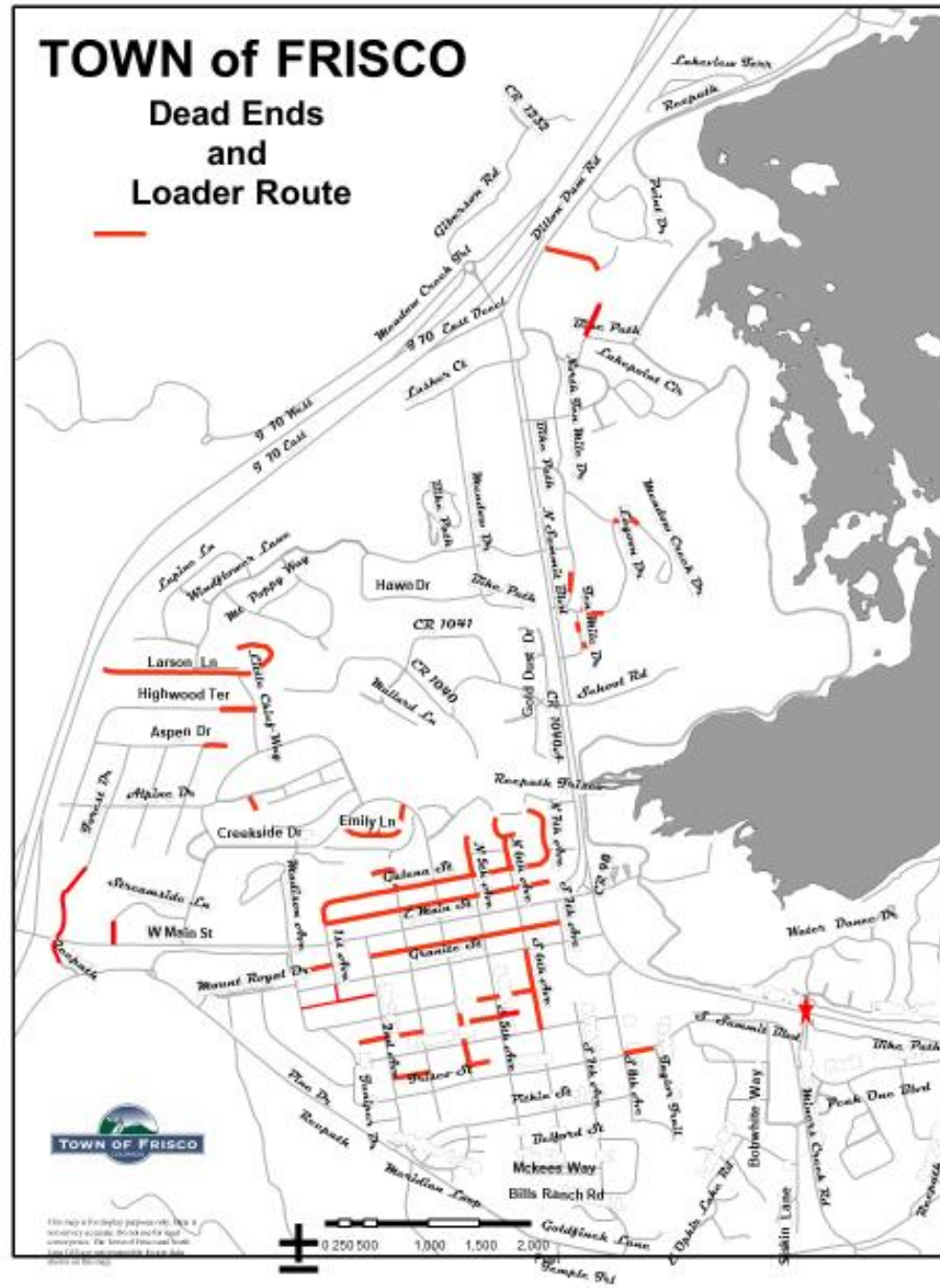
Red - First Plowing Priority

White - Private Drive or County



TOWN of FRISCO

Dead Ends and Loader Route





REC. PATHS AND SIDEWALKS

THE GROUNDS DIVISION IS PRIMARILY RESPONSIBLE FOR THE PLOWING OF ALL THE RECREATION PATHWAYS, THE HWY 9 SIDEWALKS, AND THE PEDESTRIAN UNDERPASS THAT WERE BOTH CONSTRUCTED DURING THE GAP PROJECT.

THERE ARE TWO PATHWAYS IN FRISCO WHICH ARE ABANDONED DURING THE WINTER MONTHS DUE TO THE INABILITY TO SAFELY OPERATE THE EQUIPMENT NEEDED TO SUCCESSFULLY COMPLETE A SNOW REMOVAL OPERATION. THOSE TWO SECTIONS OF PATHWAYS ARE THE CONNECTOR PATH BETWEEN ROSE CROWN CIRCLE AND LARSON LANE, AND THE HWY 9 SIDEWALK BETWEEN SCHOOL ROAD AND THE FRISCO ANIMAL HOSPITAL.





New to '22-'23 Season

- Tubing hill will bring to life weekly themes
 - Goal: To increase participant enjoyment and create an exceptional and memorable experience.
- Peak 1 Café will be re-vamped this season
 - Return of a hot food menu and will exclusively sell Colorado made beer/wine/liquor.
- Adventure Park is working to update safety information with availability in Spanish





- Nordic Center will now offer a sit-ski for rent, with the option for a private sit-ski lesson.
- Nordic Center has additionally hired a Spanish speaking instructor who can provide lessons in Spanish.
- Regarding food and beverage, the Nordic Center will be selling beer and wine, and also will be bringing back a hot soup option.

